

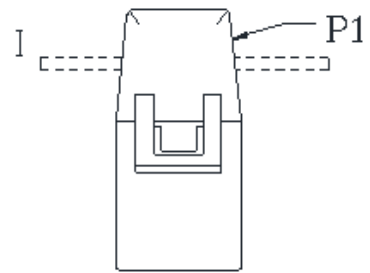
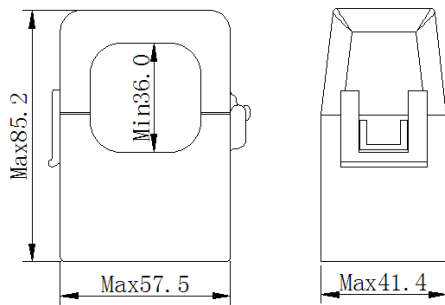
一、 SPECIFICATIONS :

- 1、 Rated Voltage: 0.66KV
- 2、 Insulation Voltage: 3KV
- 3、 Rated Frequency: 50HZ or 60HZ
- 4、 Operating Temperature: -15°C to 60°C
- 5、 Flame resistance: UL94-V0
- 6、 Certificates: CE

二、 FEATURES:

- 1、 Small cost
- 2、 Split core design ,Easier installation
- 3、 Build diode ,no high voltage danger
- 4、 Good linearity at very low current

三、 DIMENSIONS(mm):



S1---White or Red , S2---Black

四、 PARAMETERS (mm):

Model	Input (A)	Max current (A)	Turns (T)	Output	Accuracy
SCT-400A/100ma	400Aac	500ac	4000	100mA	0.5

六、 CURVE PERFORMANCE:

